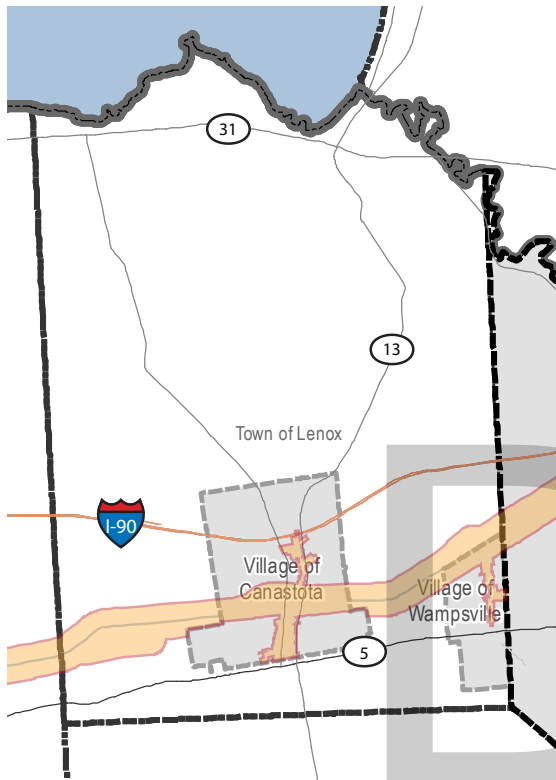


This page intentionally left blank

Draft

TOWN OF LENOX



LOCATION AND CONTEXT

The WRA runs for about 5.5 miles through Lenox east-west: the Town of Lenox contains 4 miles (approximately 2 miles on each side of the Village of Canastota) and the Village of Canastota contains 1.5 miles of the WRA. Additionally, the Old Erie Canal is the municipal boundary between the Town of Lenox and Village of Wampsville. Thus, while this section focuses only on the 4 miles of WRA specifically in the town (i.e. outside of the villages), coordination with both villages is important for WRA-related activities in the Town of Lenox. Compared to other sections there is relatively little canal infrastructure (i.e., aqueducts

and feeders) in Lenox. Outside of the villages, there is little canal-side development with the exception of the junction of North Court Street just north of the Village of Wampsville. The WRA within the Town of Lenox contains an active CSX railroad. The rail line bisects the waterway 0.7 mile west of Beebe Bridge Road, and then continues to run parallel to the Old Erie Canal waterway throughout the town's WRA. At North Court Street there is one restaurant and approximately twenty residences. The portion of the WRA west of Canastota is set in the woods and feels very remote and quiet, while the portion east of Canastota is more open and characterized by its close proximity to Canal Street which runs parallel to it.

HISTORY

The Town of Lenox in Madison County was formed from the Town of Sullivan on March 3, 1809. A portion of the territory was removed to form the town of Stockbridge in 1836, and again in 1896 to form Lincoln and Oneida. (Hammond, 1872).

Lenox encompassed part of the original Oneida Reservation. The first non-Native settlers arrived in 1792 along Cowaselon Creek. An early settler, Angel De Ferriere, owned the majority of the land within Lenox and subdivided his property for sale to other settlers. De Ferriere is credited with the establishment of grist and saw mills, a brewery and distillery, and other incipient businesses to develop the town (Hammond, 1872; Smith 1899).

The town's location along the Erie Canal bolstered and expanded its business sector and helped to increase its population. The Syracuse and Utica

TOWN OF LENOX LAND USE AND DEVELOPMENT CONTROLS

ZONING WITHIN THE WRA	
OVERLAY DISTRICTS	YES
SUBDIVISION REVIEW	YES
SITE PLAN REVIEW	YES
DESIGN STANDARDS	NO
PLANNED DEVELOPMENT ALLOWED?	YES
COMPREHENSIVE PLAN	NO
SUGGESTIONS	

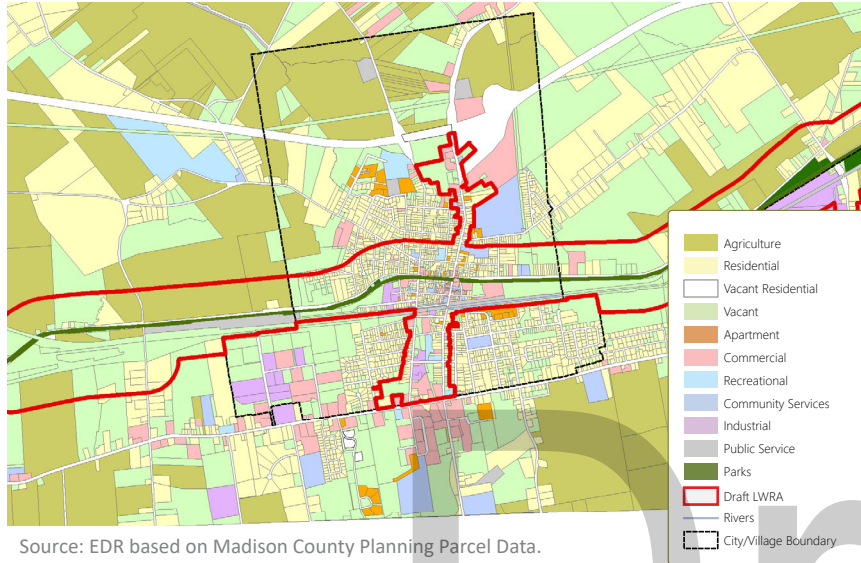
Railroad likewise facilitated transportation of goods and people to and from Lenox. The canal town also offered accommodations at two prominent hotels, the Two Good House and the Lewis House. As the New York Central Railroad and New York Barge Canal supplanted the canal system in Lenox, only small-scale industries remained (Hammond, 1872; Smith, 1899; Helmer, 2005c).

LAND USE AND ZONING

The maps on page __ provide an overview of the landuse and zoning context of the WRA within the Town of Lenox.

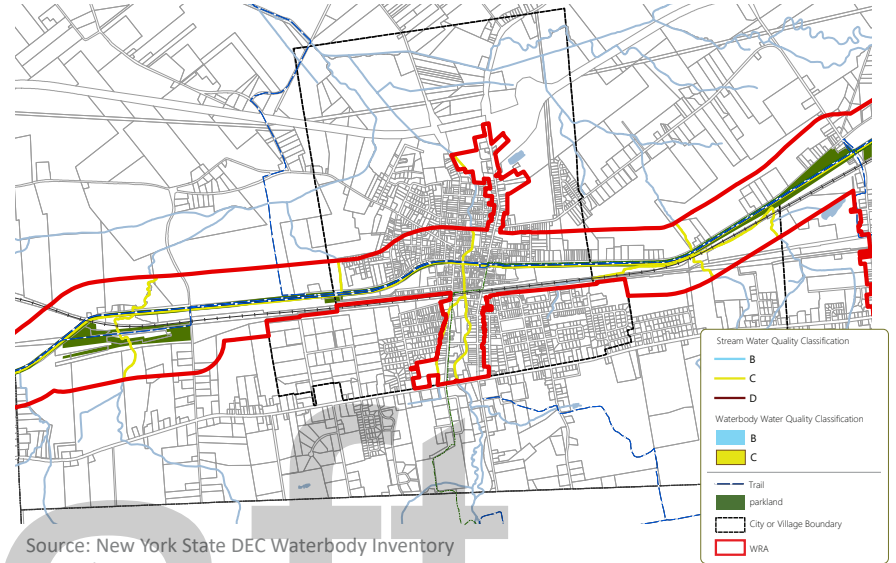
The WRA boundary passes through a fairly heavily used agricultural area as well as vacant and

LAND USE



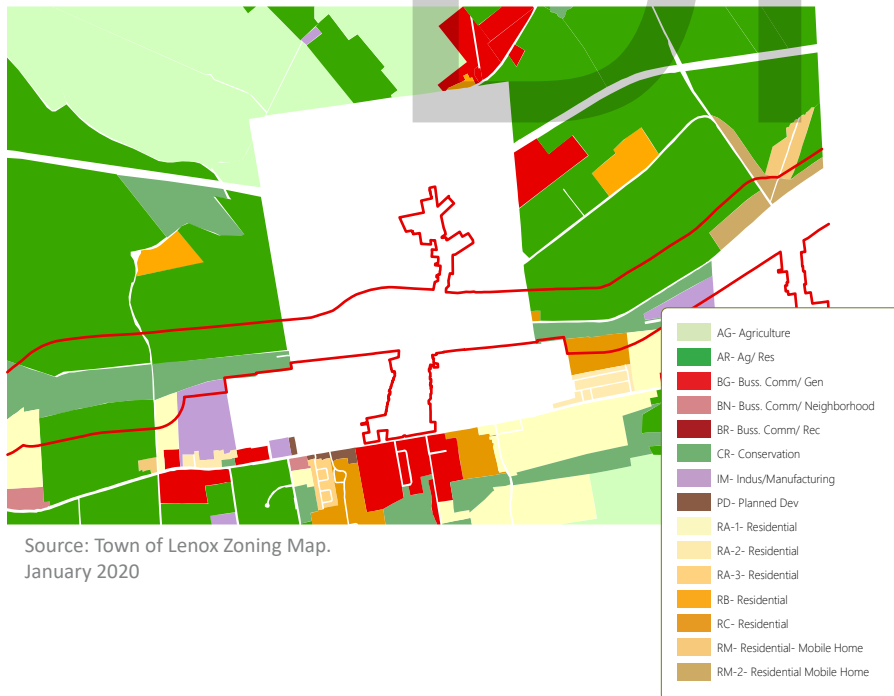
Source: EDR based on Madison County Planning Parcel Data. January 2020

WATER QUALITY



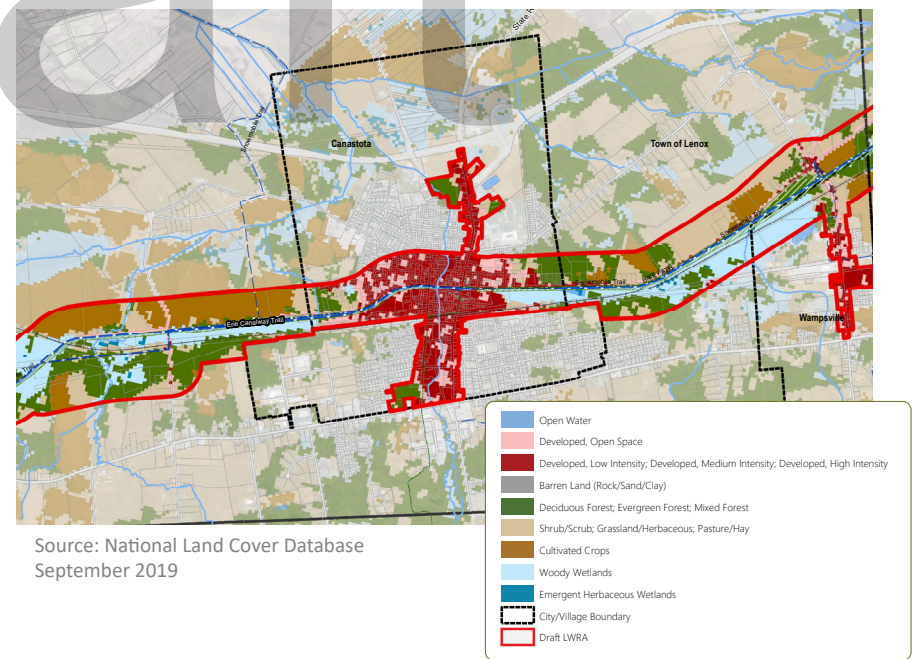
Source: New York State DEC Waterbody Inventory September 2019

ZONING



Source: Town of Lenox Zoning Map. January 2020

LAND COVER



Source: National Land Cover Database September 2019

undeveloped land (some of which is owned by New York State Parks) before reaching the Village of Canastota boundary.

Approximately 1.5 miles west of the Village of Canastota, the Erie Canalway Trail (ECT) follows a former rail corridor for approximately 0.7 mile to the intersection with Beebe Bridge Road in order to avoid the intersection of the Old Erie Canal with an active CSX rail line. Reconnection with the Canal occurs after a short road traverse on Beebe Bridge Road. The western boundary of the Village of Canastota is approximately 0.4 mile eastward from Beebe Bridge Road.

As the trail passes out of the eastern boundary of the Village, the land use character transitions back to low density residential interspersed with agricultural fields. There is a small cluster of residential development in Lenox along the intersection of the Canal and North Court Street. There is a sizable trail head with parking and trail access in this area located off the North Court Street Spur. The only commercial entity in this area is a small bar and restaurant at the intersection of Canal and Wise roads. An active CSX Rail line continues to run parallel to the Canal in this area through Wampsville and into Oneida.

WATER QUALITY AND LAND COVER

The OEC continues to be listed as a Class C waterbody as it flows through the Town of Lenox and Village of Canastota, meaning that water quality conditions must be suitable for survival and propagation of fish and wildlife. Class C waters are also to be suitable for contact and non-contact water recreation, although other factors such as depth,

access, and obstructions may limit recreational use. Recent survey data indicate that the Lenox segment meets these water quality conditions. However, obstructions by downed trees in the canal limit full access for boating. Approximately 0.6 mile east of the Village of Canastota boundary, a small inflow drains a wetland area into the canal (little is known what, if any, impact this inflow source has on the canal).

HISTORIC AND CULTURAL RESOURCES

The Town of Lenox does not have any National or State Register eligible or listed historic places.

PUBLIC ACCESS AND RECREATION

The WRA in the Town of Lenox consists of roughly 4 miles of trail bisected by the Village of Canastota. The western 2 miles are remote and wooded while the eastern 2 miles run parallel to Canal Street which introduces the presence of traffic and some low density development. With about 4,500 residents, the Village of Canastota has a comparable population to the Village of Fayetteville. As such, investments in this section represent a tangible improvement in the quality of life for a significant number of village and town residents looking for recreation opportunities outside their front door.

The section of trail west of Canastota is notably impacted by an active CSX rail line which results in an unusual instance of the trail breaking away from the canal about 0.7 mile west of Beebe Bridge Road. The trail and canal eventually re-converge via an on-road jog that crosses over the railroad tracks at Beebe Bridge Road. Although wayfinding

is straightforward where the trail veers south of the canal, the general experience of no longer being able to visually connect with the canal can be disorienting and would benefit from an explanation of forces unseen from the perspective of a trail user within the system.

This junction also creates an unusual situation for paddlers, who must travel through two constricted culverts; one under the trail and one under the railroad tracks, to arrive in an area which is not visually or physically accessible by the trail. For about 800 feet paddlers will experience a sense of 'being in a very remote location'.

Wayfinding interventions to coincide with a recently updated trailhead and parking area at Beebe Bridge road would help users find their way through this mildly challenging jog.

As the trail and canal approach Canastota from east or west, a sense of excitement builds as the dense village core starts to come into view. Improvements for the experience of both the land and water trail around this location are discussed in the Village of Canastota section (beginning on page __). It is important to note that the recently constructed Lenox Rail Trail terminus is located about 3 blocks south of the Erie Canal on Peterboro Street in the village. The Rail Trail extends into the Village of Wampsville, creating the possibility to travel on a mostly off-road loop between the two villages. Opportunities for extending this trail are discussed in the spotlight section (see subsequent page spread). East of Canastota, the towpath trail runs between Canal Street and the Erie Canal, at an elevation of about 5 feet above the Canal. A drainage ditch is

located between the towpath and the road, which some residents have bridged with 2x4s and other makeshift connections in order to access the trail.

This section culminates to the east at the intersection of Canal Street and North Court Street, where there is a sizable trail head with parking lot and another mildly challenging navigation scenario in which the trail makes a hairpin turn to cross North Court Street at the intersection with Canal Road. This point also represents the convergence of the Oneida Rail Trail and the ECT, which is an alternative way to reach the City of Oneida's downtown.

TRANSPORTATION + UTILITY CROSSINGS

STRUCTURE NAME	TYPE	OWNER	MAINTENANCE RESPONSIBILITY
Unnamed	Culvert	Canal Corp?	Canal Corp?
Unnamed	Culvert	Canal Corp?	Canal Corp?
CSX Bridge	Railroad Bridge	?	?
Herrick/Yorton Road	Farm Bridge	NYSDOT	NYSDOT
Owlville Creek	Culvert		
Beebee Bridge Road	Road	NYSDOT	NYSDOT
Dutch Settltmt. Creek	Culvert		
N. Court St. Spur	Bridge		
N. Court St. Spur	Bridge		

SPOTLIGHT: Lenox Rail Trail Extension

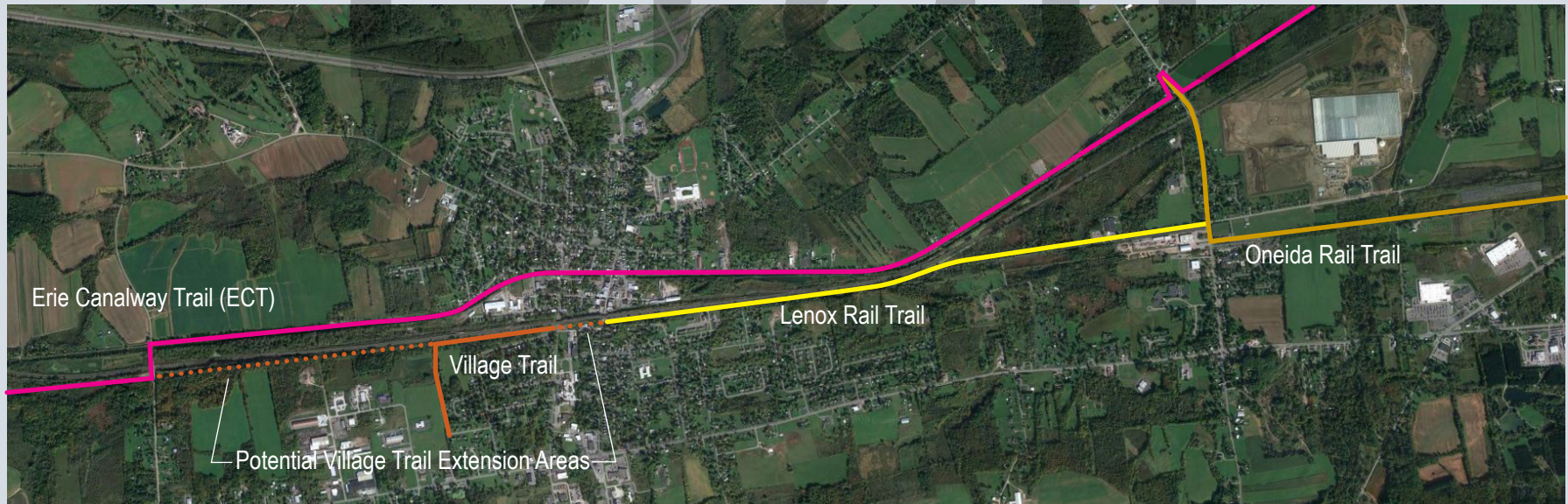
In addition to the ECT, the Town of Lenox is also home to the Lenox Rail Trail and the Oneida Rail Trail. The latter two have been constructed within the last few years. This trail system offers a variety of options to neighborhood and visiting users. The 2.25-mile Lenox Rail Trail starts at the Village of Canastota Skate Park on South Peterboro Street and connects the villages of Canastota and Wampsville. The trail parallels an operational CSX railroad and offers a pedestrian and bike link to the Oneida Rail Trail which connects the Village of Wampsville to Downtown Oneida.

There are opportunities to enhance and expand the existing system. For example, an village trail which currently goes from the west of Main Street to the edge of the Canastota Industrial Park could become an extension of the Lenox Rail Trail and provide

off-road access to Beebe Bridge Road. (See orange dotted line below)

As the parcel map to the right shows, the Town of Lenox owns a 17 acre canal-adjacent parcel which would make this possible. The trail could also extend to Route 5 to offer access to some of the commercial and dining opportunities there.

These additional trail extensions offer the opportunity to create loops of different durations within the same system. This is desirable because it would increase the variety and flexibility available to trail users. This system would have the benefit of linking several points of interest: Canastota, Wampsville, and Oneida, in a safe, enjoyable off-road alternative.





17 acre parcel owned by the Town of Lenox could be used to extend the Lenox Rail Trail in a way that would create the opportunity for a loop trail.



Oneida Rail Trail



Village of Canastota Trail



Lenox Rail Trail

Wayfinding measures would help trail users navigate the jog at Beebe Bridge Road. The trailhead and parking area here have been recently updated.



Old Erie Canal State Park is difficult to navigate at the North Court Street intersection near Wampsville



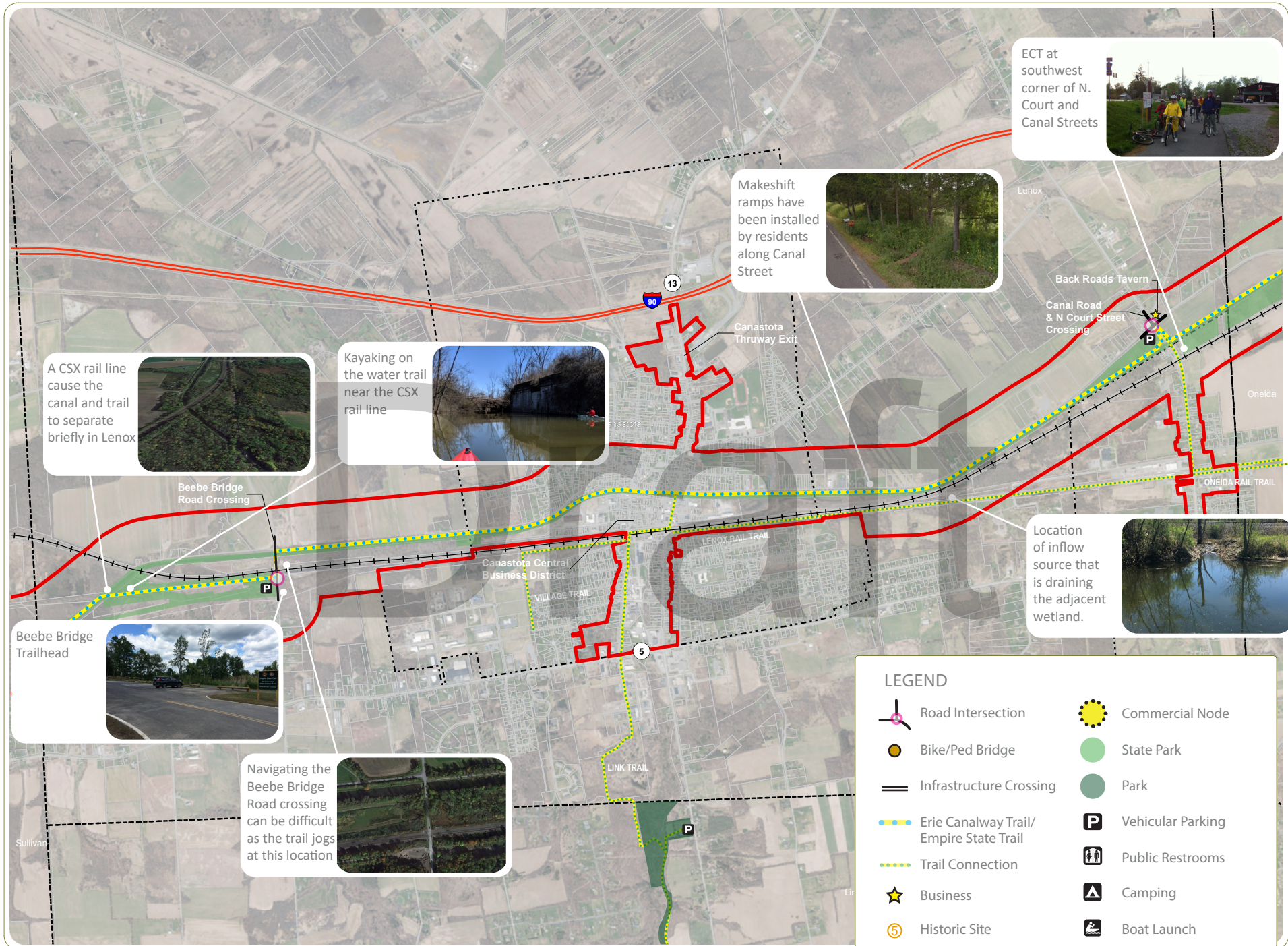
Paddling under the CSX Railroad Bridge Culvert requires passing through a narrow, dark passage.



TOWN OF LENOX ISSUES AND OPPORTUNITIES

The map to the right provides an overview of the context of the WRA in the Town of Lenox.

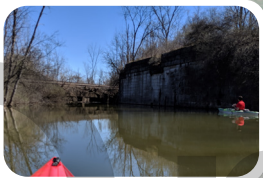
- + Wayfinding enhancements at Beebe Bridge Road intersection would help trail users navigate the system, which jogs onto the road for about 500 feet and crosses over a set of railroad tracks before returning to its linear east-west path. This is a rare instance of this type of crossing in the system. These should be coordinated with recently implemented trailhead improvements.
- + Wayfinding enhancements would also benefit trail users trying to navigate a potentially confusing jog which occurs at the Intersection of North Court Street, west of the North Court Street trail head.
- + Residents who live along Canal Road, east of Canastota, have constructed makeshift ramps to cross a drainage ditch and access the trail. Formal intervention could improve safety and access at these points.
- + The Old Erie Canal State Historic Park has 20 interpretative signs along the trail that extend through the western half of the Town of Lenox, but once you reach the Village of Canastota they cease.
- + Madison County owns a nine acre parcel on the south side of the trail just west of Beebe Bridge Road which could be used for a trail-enhancing development
- + The Town of Lenox owns a seventeen acre parcel on east side of Beebe Bridge road directly across from the trail
- + NYS owns a significant amount of property along the ECT/Canal around North Court Street
- + A stretch of the ECT in the Town of Lenox on the east side is adopted by the Great Swamp Conservancy
- + The CSX Railroad bridge and culvert (West of Beebe Bridge Road) creates an uncomfortably low and narrow passage for kayakers and canoers. The next time the railroad bridge is improved, a design which better accommodate paddlers should be considered.
- + Kimberlee Drive, Beebe Bridge Road, and North Court Street present opportunities for non-motorized boat launches which would improve the blueway trail. Currently, there are not any hand launches within the Town.
- + The Lenox Rail Trail was installed in 2019 and connects the Village of Canastota to the Village of Wampsville. This compliment to the ECT creates the opportunity to complete different “loops” which utilize different combinations of the ECT, Lenox Rail Trail, and Oneida Rail Trail, and existing road network (see spotlight on page __).
- + A Village of Canastota trail which connects Main Street to the Canastota Industrial Park could be extended through the Town of Lenox to connect to the ECT at BeeBe Bridge Road and expand the trail network between surrounding communities.



A CSX rail line cause the canal and trail to separate briefly in Lenox



Kayaking on the water trail near the CSX rail line



Makeshift ramps have been installed by residents along Canal Street



ECT at southwest corner of N. Court and Canal Streets



Beebe Bridge Road Crossing

Beebe Bridge Trailhead



Navigating the Beebe Bridge Road crossing can be difficult as the trail jogs at this location



Location of inflow source that is draining the adjacent wetland.



LEGEND

	Road Intersection		Commercial Node
	Bike/Ped Bridge		State Park
	Infrastructure Crossing		Park
	Erie Canalway Trail/ Empire State Trail		Vehicular Parking
	Trail Connection		Public Restrooms
	Business		Camping
	Historic Site		Boat Launch

